

СОЗДАЙ ЭНЕРГОНЕЗАВИСИМОСТЬ СЕБЕ И СВОЕМУ БИЗНЕСУ

ADAMS GENERATOR INSPIRAT / UNITATEA DISPOZITIVUL DE PESTE /
GRATUIT ENERGY ÎNCĂRCĂTOR

ADAMS GENERATOR inspirat / UNITATEA DISPOZITIVUL DE PESTE / GRATUIT ENERGY
ÎNCĂRCĂTOR

Produs de Verano DV, Ucraina, Odessa, 65039, 94, str. Kanatnaya. off.1
VEGA1/VEGA1.5/VEGA2/VEGA3/VEGA5



ВЕТРОГЕНЕРАТОР КУПИТЬ

АВТОНОМНОСТЬ

ВЕРТИКАЛЬНЫЙ ВЕТРОГЕНЕРАТОР

VAWT - MADE IN UKRAINE

ГЕНЕРАТОР АДАМСА

ADAMS GENERATOR INSPIRED

ЗАПРОС КМС:

Proprietarului R pașaport
Cu descrieri tehnice, Odessa 2010

Conținutul

ADAMS GENERATOR inspirat / UNITATEA DISPOZITIVUL DE PESTE / GRATUIT ENERGY
ÎNCĂRCĂTOR

-

Nº	Capitolul	Pagina
1.	Scopul și aplicarea ADAMS GENERATOR inspirate / UNITATEA DISPOZITIVUL DE PESTE / GRATUIT ENERGY 1/5kW CHARGERVEGA	3
2.	Principalele date tehnice	4-6
3.	Conținutul pachetului	6-7
4.	Note privind măsurile de securitate	7-8
5.	Structura și principiul de funcționare a ADAMS GENERATOR inspirate / UNITATEA DISPOZITIVUL DE PESTE / GRATUIT ENERGY CHARGERVEGA 1 / 5 kW	8-17
6.	Recomandări pentru utilizarea eficientă a ADAMS GENERATOR inspirate / UNITATEA DISPOZITIVUL DE PESTE / GRATUIT ENERGY 1/5kW CHARGERVEGA	17-18
7.	Note privind ambalarea, transportul și depozitarea	18
8.	Certificat de acceptare	9
9.	Garanție	10

Atenție:

Înainte de montarea și instalarea de ADAMS GENERATOR inspirate / UNITATEA DISPOZITIVUL DE PESTE / GRATUIT ENERGY 1/5kW CHARGERVEGA citiți cu atenție acest

pașaport.

Toate acțiunile trebuie să se facă în strictă conformitate cu documentația tehnică, deoarece cele mai multe defecțiuni apăsă ca urmare a asamblare incorecte sau încălcarea condițiilor de funcționare și de dispozitive de stocare. Întotdeauna amintiți-vă că ADAMS GENERATOR inspirat bobine VEGA sunt menite să funcționeze numai cu baterii în stare bună. De asemenea, în ciuda faptului că sistemul de Vega este menționat ca "dispozitiv de overunity", că nu este un caz de "perpetuum mobile" Experiența noastră este un element cheie în conturarea tehnologiei, produse și servicii pe care le oferim. Clienții noștri se bazează pe noi în furnizarea de generatoare lor, care contribuie la rentabilitatea lor și de succes.

0.1. Scopul și aplicarea de ADAMS GENERATOR inspirate / UNITATEA DISPOZITIVUL DE PESTE / GRATUIT ENERGY ÎNCĂRCĂTOR 1/5kW VEGA

ADAMS GENERATOR inspirat / UNITATEA DISPOZITIVUL DE PESTE / GRATUIT ENERGY CHARGER VEGA - un design inovator și compact, cu o eficiență mai mare decât 1 pentru sisteme de energie care au nevoie de simplitate și flexibilitate în operarea vertical Adams-inspirat generator electric VEGA este conceput pentru a furniza energie electrică în mod automat pentru consumatori și destinate utilizării în zonele în care viteza medie a vântului este de aproximativ 1 m / s, cu nici o posibilitate de a instala turbine eoliene sau conectarea la o rețea de energie electrică central

În general, acest sistem este hibrid, care transformă energia cinetică și electromagnetice în impulsuri de curent mare.

ADAMS GENERATOR inspirat / UNITATEA DISPOZITIVUL DE PESTE / GRATUIT ENERGY CHARGER VEGA este proiectat pentru:

- autonome de alimentare de producție și diverse facilități private.
- puterea de aprovizionare la cabane private
- puterea de aprovizionare a navelor maritime - barci cu iachuri, și nave
- energie electrică în sistemul de încălzire

Principalele avantaje ale ADAMS GENERATOR inspirate / UNITATEA DISPOZITIVUL DE PESTE / GRATUIT ENERGY CHARGER generatoare VEGA:

1. Independența față de factori externi (vânt, soare, etc)
2. Nu este nevoie pentru o frânare de urgență de la vânturi uragan
3. instalare Compact.
4. locația posibile ale sistemului în orice cameră
5. Aplicarea de baterii puls perceput permis pentru a prelungi viața lor de până la 2 ori.

1.1 Dispozitivul poate fi operat în următoarele moduri:

- În modul de încărcare a bateriei (AB) pentru furnizarea de dispozitive electrice cu curent direct și stabil 48 V tensiune, cu un consum de putere 2000 W;
- Într-o comună (paralelă) exploatarea de mai multe sisteme pentru încărcarea bateriei sau de încălzire;
- Într-o conexiune serie de mai multe unități la inverter islanded asociate cu rețeaua centrală, numai prin intermediul controller produse de DV Verano

tehnice 2.Main date ADAMS GENERATOR inspirat / UNITATEA DISPOZITIVUL DE PESTE / GRATUIT ENERGY ÎNCĂRCĂTOR

puterea minimă de ADAMS GENERATOR VEGA, W	1000-5000
Evaluat la VEGA putere, în funcție de generator aplicate, W	1000
DPV (G) -340-1000	
DPV (G) -340-1500	1500
DPV (G) -454-2000	
DPV (G) -454-3000	2000
DPV (G) -454-5000	3000
	5000
Putere la vârf de ieșire la baterii, în funcție de temperatura înfășurărilor generatorului, W	2000
DPV (G) -340-1000	3000
DPV (G) -340-1500	
DPV (G) -454-2000	4000
DPV (G) -454-3000	5000
DPV (G) -454-5000	7000
Viteza de rotație necesar pentru a începe încărcarea bateriei , RPS	10
Evaluat la viteza de rotație, RPS	200
DPV (G) -340-1000	
DPV (G) -340-1500	200
DPV (G) -454-2000	
DPV (G) -454-3000	200
DPV (G) -454-5000	300
	300
Eficiența ADAMS GENERATOR VEGA%	120-400

Generator	
Tip de generator: rotație directă, sincrone fără perii / permanent fara angrenaj, Fe-Nd-B magneți permanenți, 20 de perechi de poli	
AC Tensiune de ieșire (3 faze), V	220
Rotor	Exterior
Stator, de tip	Fără perii
Material carcasă	Aluminiu
Material de ancorare pin	Oțel
Single rulment axial / radial, Japonia a făcut	Oval
Redresor (similar cu pod Larionov), Japonia a făcut, (1,4 rectificare)	1
conexiune Bobine - nr neutru!	Star-tip
forța de frânare mai mic de generator, NM	0.025
Eficiența de generator	98%
Sisteme de securitate	
Rotor limitarea vitezei	electric, în gama sa de lucru
Mecanismul de încetinire a rotorului - mecanice scurtcircuitarea de sarcină sau scurtcircuitarea a înfășurărilor generatorului	
Operaționale parametri	
Întreținere perioadă	unservicable, 20 de ani durata de viața
Gama de temperaturi de funcționare, ° C	- 25 ... + 50 ° C
Booster tip AC / DC controler cu modulul intern de încărcare, tensiunea de intrare de la 7V, tensiunea de ieșire de impulsuri până la 2000V de vârf. Cantitatea de baterii necesare (mai mult posibil), în funcție de tipul de inverter	
	1 buc

ATENȚIE împreună cu un generator electric Adams inspirat-verticale de DV instalare Verano poate folosi orice inverter alti producatori. Dar VEGA de DV Verano trebuie să utilizeze AC / DC a construi controller de DV Verano.

AVERTISMENT VEGA trece prin tampon, care este bateria. Utilizarea sistemului cu inverter asociate cu rețeaua de puterea centrală nu este eficientă.

AVERTISMENT Puterea ADAMS GENERATOR inspirate / UNITATEA DISPOZITIVUL DE PESTE / GRATUIT ENERGY CHARGER VEGA sistem poate fi majorat prin creșterea numărului de generatoare utilizate. Cu o creștere a numărului de generatoare utilizate, creșterea numărului de controlori de ½. Adică pentru fiecare 2 din generator folosit un controller.

AVERTISMENT Număr de baterii reincarcabile conectate la generator poate fi mărită prin creșterea numărului de conectat în paralel controlere utilizate

3. Conținutul pachetului ADAMS GENERATOR inspirat / UNITATEA DISPOZITIVUL DE PESTE / GRATUIT ENERGY ÎNCĂRCĂTOR

#	Postul	Cantitatea
1.	Generator, în funcție de modelul achiziționat	1
2.	Cabinet-box, pentru montarea de generator și bobine	1
3.	Accelerarea bobine	6
4.	Colectarea bobine	6
5.	Bracket pentru bobine și panouri de control Duze cu built-in bobine de bord și de control	1 12
6.	opto senzor	12
7.	Baterii pentru bobine VEGA 1/1.5 VEGA 2/3/5	4 12 V, 7 Ah 12 V 26 Ah
8.	Bobine controller	1
9.	De încărcare a bateriei și bobine de comutare controller	1
10.	Controler electronic de viteze pentru baterii	1
11.	cheie electronica pentru un anumit număr de baterii (depinde de tensiunea de intrare la interter și numărul de baterii)	1

4. Măsurile de siguranță

Before assembling, installation and maintenance of ADAMS GENERATOR inspired / OVER UNITY DEVICE / FREE ENERGY CHARGER VEGA system please carefully read and understand this passport. Synchronous generator used in the system ADAMS GENERATOR inspired / OVER UNITY DEVICE / FREE ENERGY CHARGER VEGA is not a subject of repair and maintenance

NOTICE: Do not try to repair or disassemble the generator, since generator has built-in protection against unauthorized breach and opening, which can call fires, leading to melting and demagnetization of the magnets.

The cable must be 3+1 with at least 6mm². Tree veins through terminal blocks shall be connected to the three strands of generator cable, the generator, one extra attached to the ground to the general contour of the grounding.

Due to the fact that the controller that the controller is using capacitor chain to convert the voltage, care should be taken to preclude the accidental shorting of the terminal outputs between each other, when you connect various loads to the power supply.

When using heaters, batteries and inverters with ADAMS GENERATOR inspired / OVER UNITY DEVICE / FREE ENERGY CHARGER VEGA it is necessary to follow instructions for use of these products.

Prohibited:

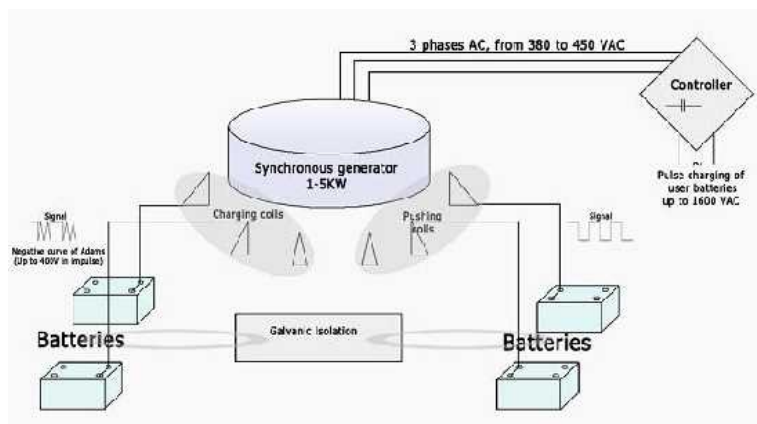
- Self removing the generator from the box.
- Mounting ADAMS GENERATOR inspired / OVER UNITY DEVICE / FREE ENERGY CHARGER VEGA system independently without special technical permission
- Operating a system with mechanical damage to the components of the system.
- Disassembling of the generator.
- Operating ADAMS GENERATOR inspired / OVER UNITY DEVICE / FREE ENERGY CHARGER VEGA without protective grounding.
- Keeping your hands in the wires of working ADAMS GENERATOR inspired VEGA system.
- Connecting to the terminal block without - AC / DC controller booster-type inverter and / or converter
- Operating ADAMS GENERATOR inspired VEGA without protective cabinet-box
- Connecting any active load directly to the output terminals of the generator, to avoid sudden braking of the generator associated with the phase mismatch. REMEMBER- connection of coils of generator – is Y-Star-type, without neutral.
- Leaving ADAMS GENERATOR VEGA disconnected from the load, and / or controller in the free rotation, as possible unwanted rotating might occur and overheating of the internal magnets
- Raising and lowering the VEGA in "working mode". Stopping of the generator during transportation is done by a temporary shorting of the generator
- Doing any welding work in the immediate vicinity of the generator or heat generator in any other way, because Neodymium magnets degauss after overheating, one must always look at current temperature parameters.

Warning:

Installation and commissioning of the system must be done by the manufacturer or distributor and manufacturer-trained professionals

WARNING - replacement of the batteries, which are used for powering of coils should be done regularly in according to manual data of the battery. Remember that the system works only if the battery is feeding EM-VEGA-coil, which does not belong to the category of "perpetual motion", so to changing of the batteries should be regularly, according to the manual

5. Structure and principle of operation of ADAMS GENERATOR inspired / OVER UNITY DEVICE / FREE ENERGY CHARGER VEGA 1/5 kW



5.1 Principle of operation

In general ADAMS GENERATOR inspired / OVER UNITY DEVICE / FREE ENERGY CHARGER VEGA is a hybrid System which converts kinetic and electromagnetic energy in a high pulse current In general, this hybrid system, which converts the kinetic and electromagnetic energy in the high current pulses.

ADAMS GENERATOR inspired / OVER UNITY DEVICE / FREE ENERGY CHARGER VEGA is a synchronous gearless multi-pole brushless generator, made by Verano. Production range of VEGA includes models from 1 to 5 kW, with outer rotor, ie body rotates the generator. Case of the generator is fully protected from the external environment, so that dust, moisture, salt and chemicals have no effect on the machine. This is an important factor, indicating the reliability of the device.

At the outside perimeter of the generator's rotor, permanent NdFeB magnets are mounted, field density of which was adjusted individually, based on the speed of the generator developing flywheel inertia of motion

General view of ADAMS GENERATOR inspired / OVER UNITY DEVICE / FREE ENERGY CHARGER VEGA:



there are mounting surfaces, closed with plugs, on the lid. They are used for additional systems in creating of multiplied ADAMS GENERATOR inspired / OVER UNITY DEVICE / FREE ENERGY CHARGER VEGA systems

Side view:



Name	Material	Note
Bottom cover	Aluminium, duralumin, stainless steel	1,2-2 mm thick
Edge	Steel, aluminium	Angle, square
Flange	Steel	Pipe 76x8 length 120mm Skirt band b=7mm
Frame	Steel, stainless steel, aluminium	Beam - square 20x40, Jumper - square 20x20 Leg - pipe 24x1,5
Spacers	Steel, stainless steel, aluminium	Band b=7

Possibility of installation and using multiple systems simultaneously



Regenerating system of the rotor uses module of accelerating electromagnetic coils, 8 ohms, TIME of OPENING is fixed and is 1.8 DEGREES No matter what the Rotor speed is, "CEMF" USED FOR REGENERATION AMPLITUDE PULSE 350 regeneration efficiency 300%

Synchronous generator, by DV Verano, with N-pole facing outwards permanent magnets, ensures a constant rotational speed under the control of the impact of jogging accelerating special geometry electromagnetic coils

High-voltage negative spikes on collecting coils transfer energy to batteries, to support continuous rotation. This is a new approach to the well-known Adams motor design.

Generated by the generator three-phase alternating current goes into the controller, which multiplies and accumulates the energy over time, then outputs it in the form of intermittent high-current pulses thus charging the batteries of the inverter.

Converting EMF of free running generator into statically stored charge of the batteries, with the function of the accumulation and multiplication, after reaching the threshold energy is dumped to the battery banks, after being converted into pulses of charging current, frequency is determined by the time of integration (energy storage), speed, and also by power of the generator, in terms of additional voltage from the turnover.

For 1.5 kW - 1.2 V

For 2 kW - 2.47 V

Time management of the accumulation of energy is made by electronic control circuit which realizes functions of electronic gear multiplier.

Output parameters

Output pulse current from battery controller is 5-50 A, repetition rate is determined by the energy of rotor rotation

Output voltage is linear and is determined like additional 2, 147 V for every additional rotation of the generator. Using the regenerating of rotation of the rotor is possible only with small loads on the shaft, controller supplied with the equipment has a feature of picking of electricity produced in the "idle mode" with the function of multiplication and accumulation of energy in a form of the electrostatic charge of predefined power, which is followed by converting it to the charging pulse current required for charging batteries.

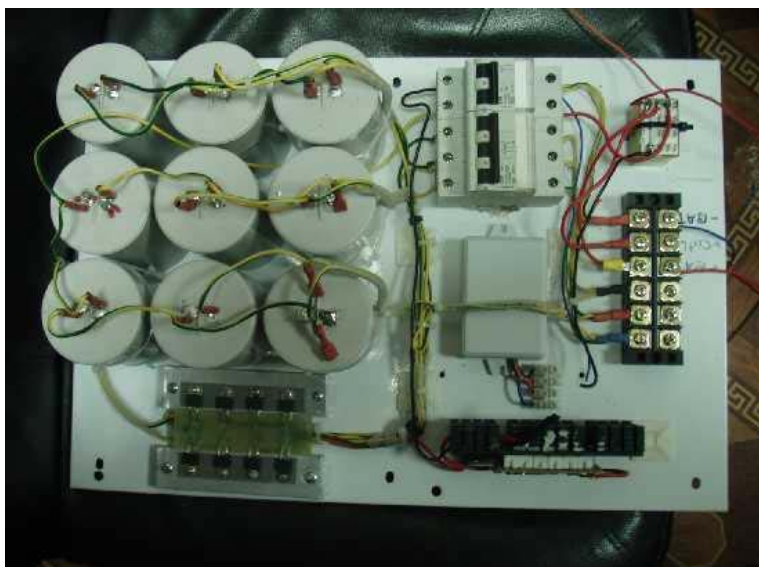
Back emf is a Lenz effect reversed polarity current surge that happens whenever current is suddenly stopped - as happens all the time in a pulse motor. Many people confuse back emf with the negative energy manifested in the Adams motor. Transducted negative time reversed energy flows backwards to its source, while the collection of this energy is done by collecting coils and goes through a special electronic driver on the recuperative charging batteries for future electric push reel, this is the self-healing, pushing part of the system.

The problem that confronted Sir Adams, as well as all his followers was in receiving high return from this generator, it was necessary to overcome the back EMF (also called counter-emf cEMF) from the stator windings.

In VEGA system there is no such problem, because specially designed controller / multiplier uses mostly EMF from idling generator and when the desired number of revs is reached – uses rotational

inertia of the generator.

Using MOSFET- type transistor, with commuting 250v+ capacitor, combined with a simple bypass for the recharge of the source.



Discharging pulses, which charge the battery, are generated in the controller after it reaches the maximum threshold on the multiplier.

Energy stored is determined by the upper threshold of capacitor:

$$E = \frac{CU^2}{2} \quad (J)$$

Time of integration, ie the time to reach the threshold for multiplicative device is determined by the speed of rotation of the rotor, in our case the integration time is synchronized with a different speed to achieve constant energy

The principle of a controller based on the principle of cascade capacitor multiplier (1 to 4), which concept was designed in 1919 by Swiss physicist Heinrich Greynaher.

The controller is based on the multiplier and converts AC or pulsating DC voltage to high DC voltage. The controller is arranged from the ladder of capacitors and diodes

The improved scheme is used by John Cockcroft and Ernest Walton in studies for which they received the Nobel Prize in Physics in 1951 Unlike similar systems used in transformers, advantages of using these elements in the controller are:

1. Method does not require a heavy core and a serious isolation, as the voltage at all levels are equal.
2. By using only capacitors and diodes controllers of this type can convert relatively low voltage is very high, while they find themselves a lot lighter and cheaper than transformers.
3. There is an opportunity to output the voltage from each stage of the scheme, as well as in multi-output transformer.
4. Formation of high-frequency inductive pulses, which in combination with a large inertia of the generator will charge the battery at revs is up to 1/2 of the nominal of power generator

The device provides coordination of 3-phase AC generator with battery charging circuit

For visual control of the battery and charging the battery there are indicators and dials on the front panel.

A - Battery voltage

B - Battery charging current (average value) - $0.7 \times I_{max}$

The load for the system is a battery with current-limiting resistor. For small capacitive batteries, the load can be directly connected to the device.

Internal switches

A - built-in automatic switch – which is used for emergency braking of the turbine – UP -turbine is stopped

B - double switch - which is used for breaking the circuit charging the battery - position DOWN - circuit is closed, the battery charging current is fed

Operational mode of the CONTROLLER 0 +25 degrees Celsius. Install inside only. Optionally you can order a closed package for the controller system to work in a wider range of temperatures

8 batteries 12V-200Ah needs to be connected to the device.

Charging the battery is done with high-frequency ultrashort impulses (voltage pulse reaches 600 V) and current pulses of 0.1-0.5S to battery

Recommendations for effective usage of ADAMS GENERATOR inspired / OVER UNITY DEVICE / FREE ENERGY CHARGER VEGA 1/5kW

For the most efficient use of purchased ADAMS GENERATOR inspired / OVER UNITY DEVICE /

FREE ENERGY CHARGER VEGA system we recommend to:

1. carefully read the owner's manual
2. number rechargeable battery generator can be increased by increasing the number of the controllers connected in parallel. Note that using the system for charging the battery must be based on the selection of adequate capacities of the battery can charge the battery to the acquired system. Always remember that the system acquired by you charges the battery, but the time to charge the battery is directly proportional to the number of batteries you have purchased, their type and energy capacity
3. always remember that ADAMS GENERATOR inspired / OVER UNITY DEVICE / FREE ENERGY CHARGER VEGA works only through the buffer, which is the battery. Using the system with the inverter associated with the central grid is not effective.
4. VEGA power can be extended by increasing the number of used generators. With an increase in the number of used generators, number of controllers increases by $\frac{1}{2}$. I.e. with every 2 new generators 1 new controller needs to be used.

Resource, time of service

The designated resource of this product is 172800 hours or 20 years. This length of service is valid when the user observes all the terms and conditions of transportation and usage set in the operational documentation. ADAMS GENERATOR inspired / OVER UNITY DEVICE / FREE ENERGY CHARGER VEGA is not subject to maintenance or replacement of internal components.

7. Notes on packaging, transporting and storage

The generator with a system of coils is supplied in an aluminum box,
Dimensions WxHxD = 640x640x400 mm
Dimensions of packing WxHxD mm = 680x680x420
Gross Weight -

The controller comes in a wall cabinet,
dimensions WxHxD = 450x600x250 mm

Dimensions of packing WxHxD = 500x620x300 mm

7.1. ADAMS GENERATOR inspired / OVER UNITY DEVICE / FREE ENERGY CHARGER VEGA 1/5kW comes in an original packaging. If you need to transfer it to a new location of installation, you should observe following conditions:

- All components should be laid to their places in their original packaging;
- sockets at the ends of cables should be wrapped in plastic film or oiled paper, the output wires of the generator should be short-circuited by connecting them together
- Do not turn over boxes, handle the with care, with bottom down.

7.2. VEGA should be stored in the packaging in a closed unheated rooms with natural ventilation at temperatures from - 40 to + 50 ° C in the absence of environmental acid and other vapors, which may harm system units and parts of the controller. High moisture is not allowed the room of storage.

7.3. In the transport use labels: Top, handle with care, afraid of dampness.

Transportation of VEGA must be made only in a packaging provided by manufacturer in accordance with the rules of carriage of goods in transport

9. Certificate of acceptance

Are manufactured and accepted in accordance with the specifications and are found eligible for operation.

Manufacturer reserves the right to change specifications without notice

WARRANTY

Manufacturer reserves the right to make changes in design and manufacturing process of VEGA, these changes do not allow obligations to change or improve the previously released products.

These warranties do not limit legal rights of consumers.

Warning:

- This warranty applies only to ADAMS GENERATOR inspired / OVER UNITY DEVICE / FREE ENERGY CHARGER VEGA1 / 5 kW, completed in accordance with this manual. If you use separate parts of VEGA or extend it with not allowed units, machinery and premises without the allowance of the manufacturer all warranty obligations are removed.
- For installing and connecting system, we recommend you to contact the manufacturer. You can use the services of other qualified professionals or do it yourselves, in strict accordance with the installation and operational documentation "Manual VEGA1/5kW» which you can buy from the manufacturer. In case VEGA 1 / 5 kW failure due to improper installation, assembly or usage you lose the right for warranty.

10.1. The warranty covers defects of production for one year from date of purchase, including parts and replacement costs.

10.2. This warranty is valid only if the port is filled properly by the seller and indicates the date of purchase.

10.3. This warranty applies only to products used in non-commercial purposes.

10.4 The warranty does not apply if failure is due to:

- unintended in the passport application VEGA or parts thereof (including electrical overload), the connection to inappropriate (failure) converter or to the faulty electrical device;
- damage or changing in settings of VEGA or some of its units in connection with the hit or falling of devices;
- Improper installation and assembly of mechanical and electrical components or improper care and maintenance;
- damage to the product in a natural disaster, flood, fire, or other similar circumstances beyond the control of the manufacturer, as well as the operation of the product or its parts in the climatic conditions which are not allowed by this manual;
- changes in product design without the notice of the manufacturer;
- tampering the seals, fasteners, established by the manufacturer without his presence or the presence of a person authorized by the manufacturer; operation of the product without a load, the experiments with VEGA without the load, shorting of the generator at more than 10 rpm in manual mode, using wires from the generator.
- If the product was operated with uncorrected defects.

10.5 Any claims for quality and performance products are accepted and removed only after verification of them by specialist of the manufacturer or by person authorized by the manufacturer .

10.6 This warranty does not cover damage of wear parts manufactured by other manufacturers (lamps, LEDs, contact brushes, etc.).

10.7 The manufacturer shall have the right to refuse all or partly of warranty, in case of delayed notification of defects found by the buyer of the product.

10.8 The warranty on the system VEGA does not covers batteries using with EM coils

NOTE:

ADAMS GENERATOR inspired / OVER UNITY DEVICE / FREE ENERGY CHARGER VEGA system warranty is void in the following cases:

1. connecting the inverter to the electric loads without VEGA 1 / 5 kW, connecting low-resistance load inverter is possible without failure of power supply.
2. User / buyer must set the switch on the box (Fig. 4 Pos. 2,4) in the parking mode for prolonged non-usage or in case of disconnecting batteries from VEGA and loads

Standard Specification

1. GENERATOR (or 1/1.5/2/3/5 кВт)- depend of asking model

2. Alluminium body with Farady's carage

3. Controller with coils exit impulse for charging until 2000 V (entrance 6-400V, exit impulse with current 0.1-0.5C of battery)

4. Super capacitor 27-50F/ 450-500A/12-18V- 2 pcs

OPTION

1. INVERTOR

2. BATTERIES FOR END USER

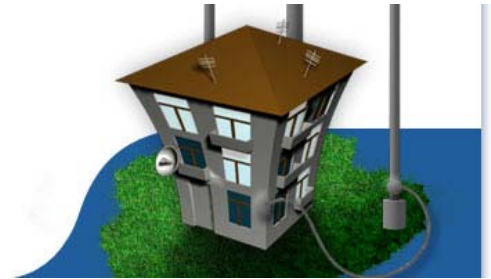
ADAMS GENERATOR inspired / OVER UNITY DEVICE / FREE ENERGY CHARGER VEGA In standart specification	Rotor diameter MM	W	Quantaties of charging batteries in standart specification	RPM	EXPORT PRICE START FROM 01.09.2010 \$ In standart specification
1	340	1,000	4 АКБ (12В /100А/ч)	200	8,000.00
1.5	340	1,500	4 АКБ (12В /200А/ч)	300	11,250.00
2	340	2,000	4/6 АКБ (12В /150А/ч)	360	14,000.00
2.5	450	2,500	4/6 АКБ (12В /200А/ч)	250	16,250.00
3	450	3,000	4/6 АКБ (12В /200А/ч)	300	18,000.00
5	450	5,000	4/6/10 АКБ (12В /200А/ч)	300	20,000.00

The specification can be change without noties

For today we had installed more than 20 units all over the world.

DV VERANO manufacturing ADAMS GENERATOR inspired / OVER UNITY DEVICE / FREE ENERGY CHARGER near 5-10 units per month, therefore we are looking for investments (near 600, 000 USD) for starting multy-serial manufacturing or we should like to seil the technical documentation package (1 mln. USD) for manufacturing as multy serial

unit in Buyer's country.



ДП "ВЕРАНО"

Design: yov.od.ua